



Cable ID/ Test ID: PCU5-10CC-0200-R-001

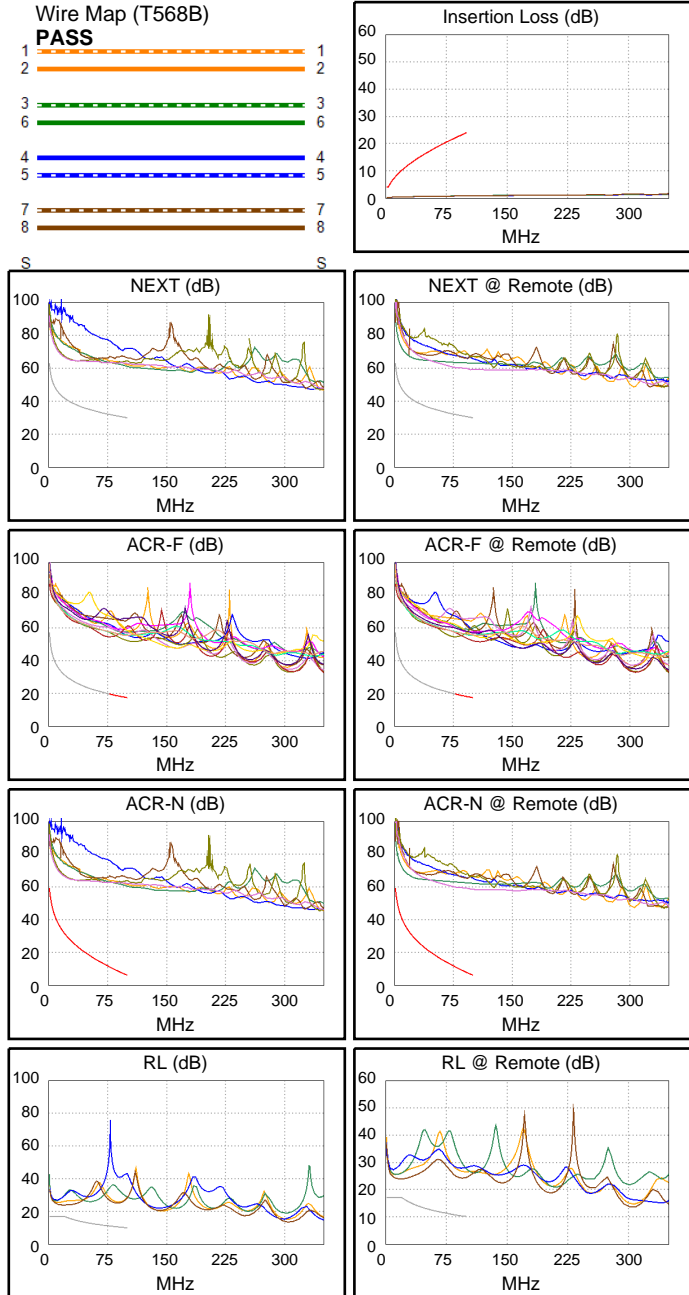
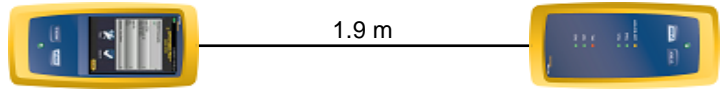
Test Limit: ISO11801 Channel Class D
Limits Version: V7.11
Date / Time: 2026/01/27 17:44:05
Operator: Lanberg
Headroom 24.6 dB (NEXT 4,5-7,8)
Cable Type: Cat 5e U/UTP
NVP: 69.0%

Main: Versiv
S/N: 24410021
Software Version: V6.14 Build 9
Calibration Date: 2025/05/28
Adapter: DSX-602 (DSX-CHA004)
S/N: 25073276

Test Summary: PASS

Remote: Versiv
S/N: 24250049
Software Version: V6.14 Build 9
Calibration Date: 2025/05/28
Adapter: DSX-602R (DSX-CHA004)
S/N: 25073277

Length (m), Limit 100.0	[Pair 4,5]	1.9
Prop. Delay (ns), Limit 555	[Pair 3,6]	10
Delay Skew (ns), Limit 50	[Pair 1,2]	1
Resistance (ohms), Limit 25.00	[Pair 4,5]	1.54
Insertion Loss Margin (dB)	[Pair 1,2]	23.3
Frequency (MHz)	[Pair 1,2]	100.0
Limit (dB)	[Pair 1,2]	24.0



	Worst Case Margin		Worst Case Value	
	MAIN	SR	MAIN	SR
N/A				
Worst Pair	4,5-7,8	1,2-4,5	1,2-4,5	4,5-7,8
NEXT (dB)	24.6	24.6	31.1	29.1
Freq. (MHz)	17.6	12.4	100.0	100.0
Limit (dB)	42.9	45.5	30.1	30.1
Worst Pair	7,8	4,5	4,5	4,5
PS NEXT (dB)	25.1	25.6	31.1	30.2
Freq. (MHz)	19.0	15.5	99.5	100.0
Limit (dB)	39.3	40.8	27.1	27.1
PASS				
Worst Pair	4,5-3,6	3,6-4,5	3,6-4,5	4,5-3,6
ACR-F (dB)	34.8	34.8	34.9	34.9
Freq. (MHz)	74.5	74.5	100.0	100.0
Limit (dB)	20.0	20.0	17.4	17.4
Worst Pair	4,5	4,5	4,5	3,6
PS ACR-F (dB)	35.4	35.5	35.4	36.4
Freq. (MHz)	99.8	76.3	99.8	100.0
Limit (dB)	14.4	16.8	14.4	14.4
PASS				
Worst Pair	4,5-7,8	1,2-4,5	1,2-4,5	4,5-7,8
ACR-N (dB)	29.8	29.3	54.4	52.4
Freq. (MHz)	3.6	3.3	100.0	100.0
Limit (dB)	49.9	50.9	6.1	6.1
Worst Pair	4,5	1,2	4,5	4,5
PS ACR-N (dB)	30.8	30.4	54.3	53.5
Freq. (MHz)	1.4	1.0	99.5	100.0
Limit (dB)	54.1	56.3	3.2	3.1
N/A				
Worst Pair	7,8	7,8	7,8	7,8
RL (dB)	6.9	6.9	7.7	7.1
Freq. (MHz)	20.1	20.1	24.3	20.9
Limit (dB)	17.0	17.0	16.2	16.8

Compliant Network Standards:
 10BASE-T 100BASE-TX 100BASE-T4
 1000BASE-T 2.5GBASE-T ATM-25
 ATM-51 ATM-155 100VG-AnyLan
 TR-4 TR-16 Active TR-16 Passive