



**Cable ID/ Test ID: PCU5-10CC-1500-BK-001**

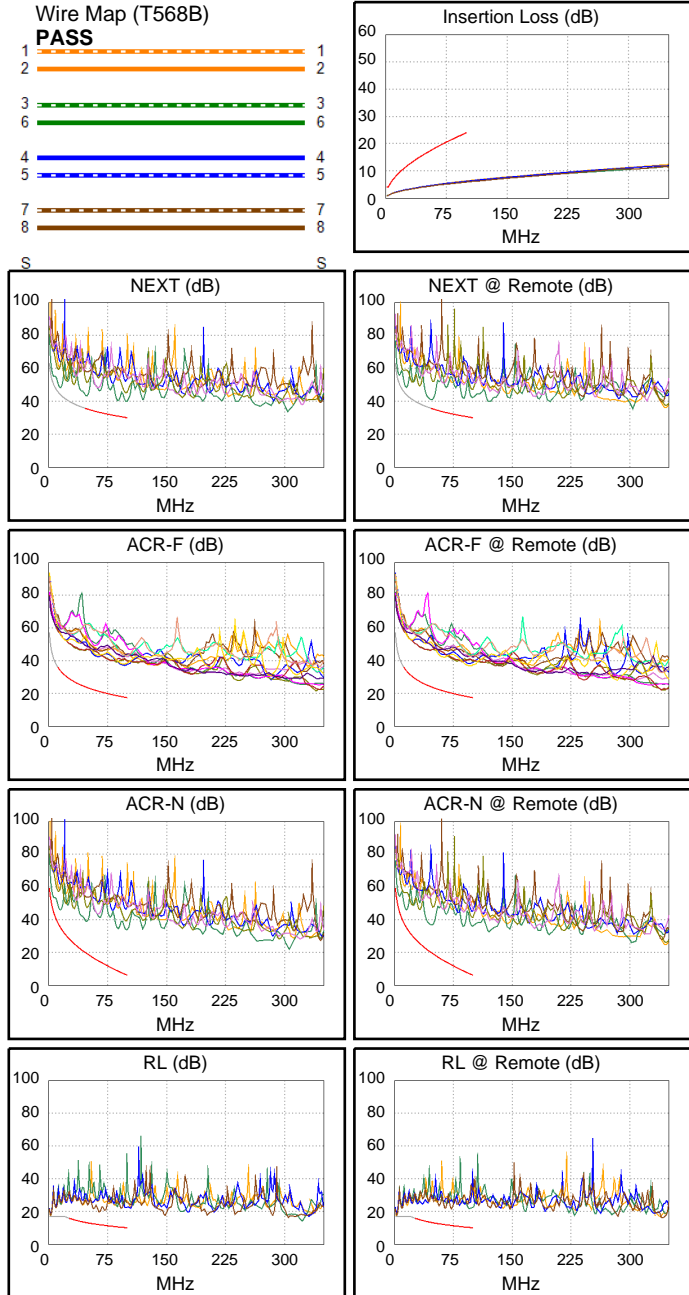
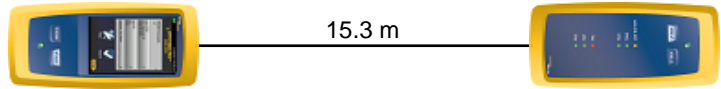
**Test Limit: ISO11801 Channel Class D**  
Limits Version: V7.11  
Date / Time: 2026/01/27 11:23:03  
Operator: Lanberg  
**Headroom 5.2 dB (NEXT 1,2-4,5)**  
Cable Type: Cat 5e U/UTP  
NVP: 69.0%

Main: Versiv  
S/N: 24410021  
Software Version: V6.14 Build 9  
Calibration Date: 2025/05/28  
Adapter: DSX-602 (DSX-CHA004)  
S/N: 25073276

**Test Summary: PASS**

Remote: Versiv  
S/N: 24250049  
Software Version: V6.14 Build 9  
Calibration Date: 2025/05/28  
Adapter: DSX-602R (DSX-CHA004)  
S/N: 25073277

Length (m), Limit 100.0	[Pair 7,8]	15.3
Prop. Delay (ns), Limit 555	[Pair 3,6]	77
Delay Skew (ns), Limit 50	[Pair 3,6]	3
Resistance (ohms), Limit 25.00	[Pair 3,6]	11.61
Insertion Loss Margin (dB)	[Pair 1,2]	17.8
Frequency (MHz)	[Pair 1,2]	100.0
Limit (dB)	[Pair 1,2]	24.0



Worst Case Margin Worst Case Value

PASS	MAIN	SR	MAIN	SR
Worst Pair	1,2-4,5	1,2-4,5	1,2-4,5	1,2-4,5
<b>NEXT (dB)</b>	7.7	5.2	9.8	5.3
Freq. (MHz)	48.5	47.3	99.5	47.8
Limit (dB)	35.5	35.7	30.1	35.6
Worst Pair	1,2	1,2	1,2	1,2
<b>PS NEXT (dB)</b>	10.6	8.1	12.6	8.2
Freq. (MHz)	47.8	47.3	99.5	47.8
Limit (dB)	32.6	32.7	27.1	32.6

PASS	MAIN	SR	MAIN	SR
Worst Pair	1,2-7,8	7,8-1,2	1,2-7,8	7,8-1,2
<b>ACR-F (dB)</b>	19.2	18.8	19.2	18.8
Freq. (MHz)	96.0	96.0	96.0	96.0
Limit (dB)	17.8	17.8	17.8	17.8
Worst Pair	7,8	1,2	7,8	1,2
<b>PS ACR-F (dB)</b>	20.5	21.0	20.6	21.0
Freq. (MHz)	96.0	96.0	96.8	96.0
Limit (dB)	14.8	14.8	14.7	14.8

PASS	MAIN	SR	MAIN	SR
Worst Pair	1,2-4,5	1,2-4,5	1,2-4,5	1,2-4,5
<b>ACR-N (dB)</b>	8.4	8.2	27.7	27.3
Freq. (MHz)	5.1	4.4	99.8	88.3
Limit (dB)	46.7	48.2	6.1	8.6
Worst Pair	1,2	1,2	1,2	1,2
<b>PS ACR-N (dB)</b>	11.2	10.9	30.3	29.7
Freq. (MHz)	5.1	4.5	99.5	88.3
Limit (dB)	43.7	44.9	3.2	5.6

PASS	MAIN	SR	MAIN	SR
Worst Pair	7,8	1,2	7,8	7,8
<b>RL (dB)</b>	7.8	9.1	7.8	10.2
Freq. (MHz)	64.8	23.6	64.8	72.8
Limit (dB)	11.9	16.3	11.9	11.4

Compliant Network Standards:  
 10BASE-T      100BASE-TX      100BASE-T4  
 1000BASE-T    2.5GBASE-T      ATM-25  
 ATM-51        ATM-155          100VG-AnyLan  
 TR-4           TR-16 Active      TR-16 Passive