



**Cable ID: PCF6-10CC-0150-BK-001**

Test Limit: ISO11801 Channel Class E

Limits Version: V7.11

Date / Time: 2025/10/20 13:45:41

Operator: Impakt S.A - Serwis

Headroom 20.2 dB (NEXT 3,6-4,5)

Cable Type: Cat 6 F/UTP

NVP: 70.0%

Main: Versiv

S/N: 24410021

Software Version: V6.13 Build 2

Calibration Date: 2025/05/28

Adapter: DSX-602 (DSX-CHA004)

S/N: 25073277

**Test Summary: PASS**

Remote: Versiv

S/N: 24250049

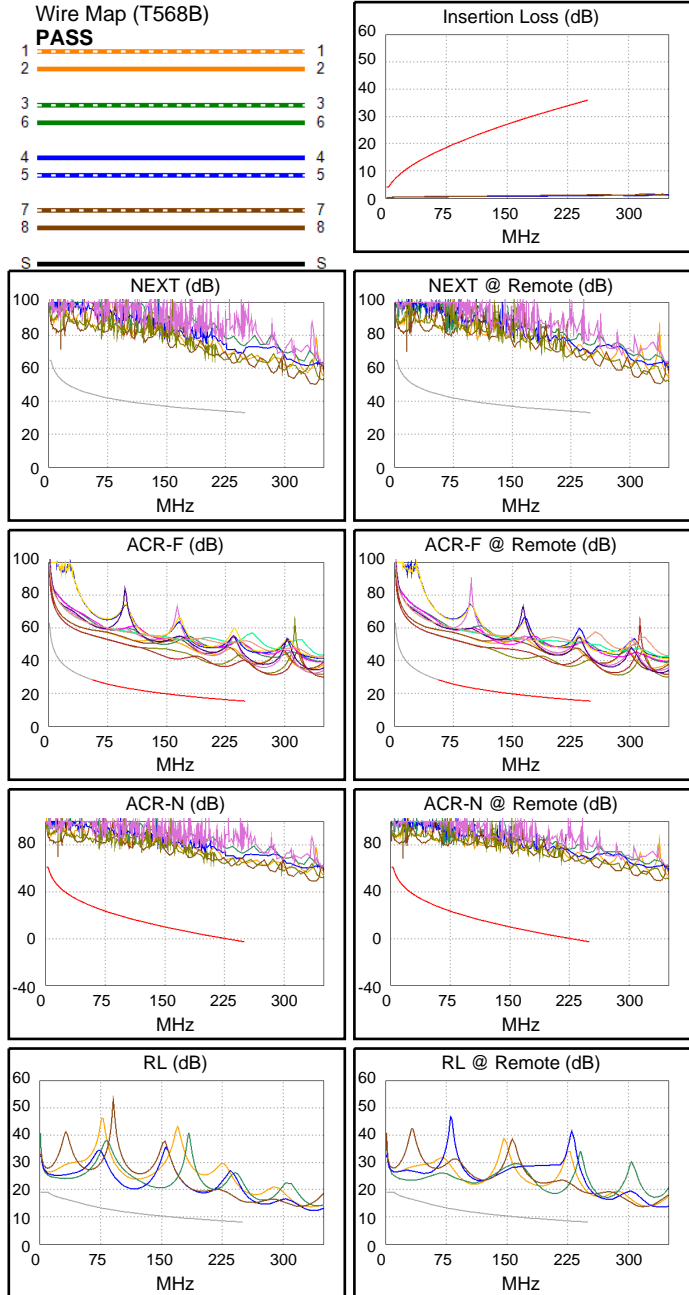
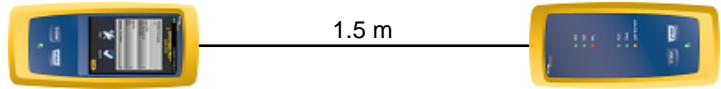
Software Version: V6.13 Build 2

Calibration Date: 2025/05/28

Adapter: DSX-602R (DSX-CHA004)

S/N: 25073276

Length (m), Limit 100.0	[Pair 1,2]	1.5
Prop. Delay (ns), Limit 555	[Pair 1,2]	7
Delay Skew (ns), Limit 50	[Pair 1,2]	0
Resistance (ohms), Limit 25.00	[Pair 7,8]	1.04
Insertion Loss Margin (dB)	[Pair 7,8]	34.8
Frequency (MHz)	[Pair 7,8]	250.0
Limit (dB)	[Pair 7,8]	35.9



Worst Case Margin Worst Case Value

N/A	MAIN	SR	MAIN	SR
Worst Pair	3,6-4,5	3,6-4,5	3,6-4,5	3,6-7,8
<b>NEXT (dB)</b>	21.5	20.2	29.2	31.1
Freq. (MHz)	15.5	15.5	234.5	241.0
Limit (dB)	53.5	53.5	33.6	33.4
Worst Pair	3,6	3,6	3,6	3,6
<b>PS NEXT (dB)</b>	21.8	21.3	30.2	31.8
Freq. (MHz)	3.6	2.9	239.5	250.0
Limit (dB)	61.2	62.0	30.5	30.2

PASS	MAIN	SR	MAIN	SR
Worst Pair	4,5-3,6	3,6-4,5	4,5-3,6	3,6-4,5
<b>ACR-F (dB)</b>	20.1	20.2	20.4	20.4
Freq. (MHz)	221.0	221.0	227.0	225.5
Limit (dB)	16.4	16.4	16.1	16.2
Worst Pair	3,6	3,6	3,6	3,6
<b>PS ACR-F (dB)</b>	22.1	22.3	22.2	22.5
Freq. (MHz)	218.5	211.0	221.0	215.0
Limit (dB)	13.5	13.8	13.4	13.6

PASS	MAIN	SR	MAIN	SR
Worst Pair	3,6-4,5	3,6-4,5	3,6-4,5	3,6-7,8
<b>ACR-N (dB)</b>	26.3	25.6	63.2	65.4
Freq. (MHz)	3.9	2.9	234.5	241.0
Limit (dB)	59.1	61.0	-1.1	-1.8
Worst Pair	3,6	3,6	3,6	3,6
<b>PS ACR-N (dB)</b>	25.6	25.1	63.8	67.1
Freq. (MHz)	3.6	2.9	233.5	250.0
Limit (dB)	57.2	58.0	-3.9	-5.8

N/A	MAIN	SR	MAIN	SR
Worst Pair	3,6	3,6	7,8	3,6
<b>RL (dB)</b>	6.2	6.1	7.7	9.7
Freq. (MHz)	9.8	16.9	250.0	209.5
Limit (dB)	19.0	17.9	8.0	8.8

Compliant Network Standards:  
 10BASE-T 100BASE-TX 100BASE-T4  
 1000BASE-T 2.5GBASE-T 5GBASE-T  
 ATM-25 ATM-51 ATM-155  
 100VG-AnyLan TR-4 TR-16 Active  
 TR-16 Passive