



**Cable ID: PCF6-10CU-0150**

Test Limit: ISO11801 Channel Class E

Limits Version: V7.9

Date / Time: 08/08/2025 10:21:40 AM

Operator: QC

Headroom 15.3 dB (NEXT 3,6-4,5)

Cable Type: \*cat 6 S/FTP\*

NVP: 76.0%

Main: Versiv

S/N: 1824298

Software Version: V6.11 Build 2

Calibration Date: 12/27/2024

Adapter: DSX-8000 (DSX-CHA804)

S/N: 22211877

**Test Summary: PASS**

Remote: Versiv

S/N: 1820302

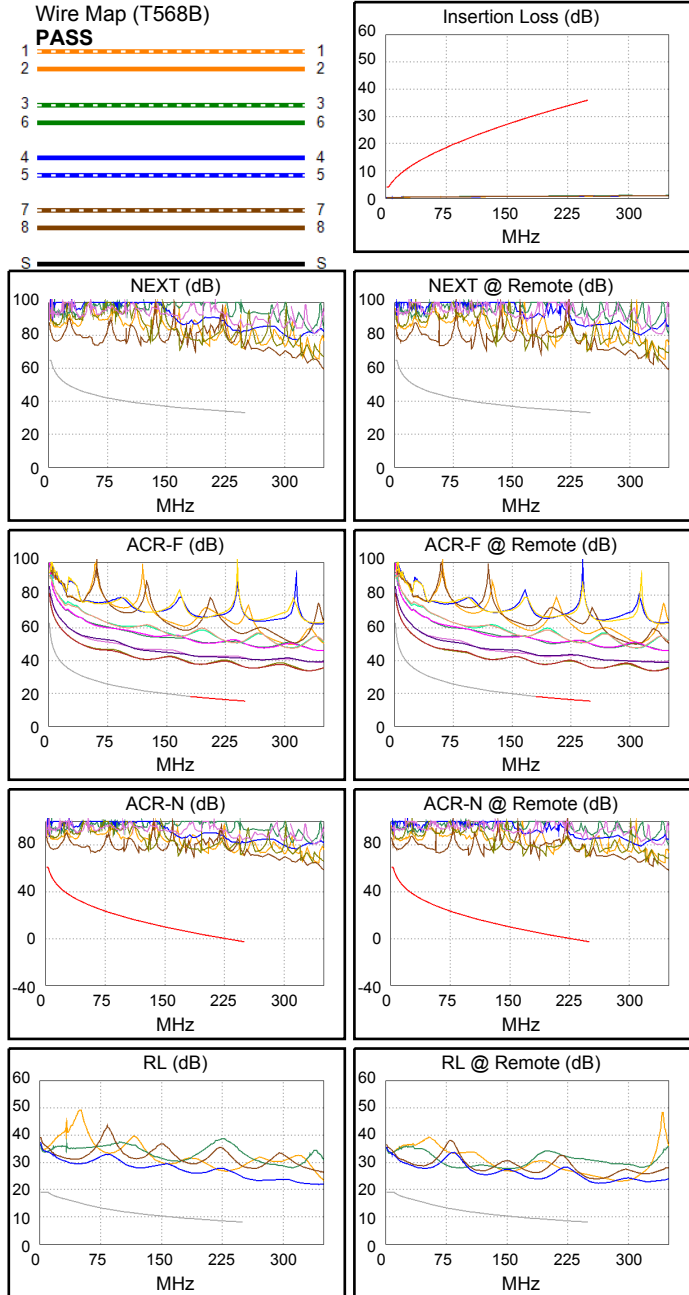
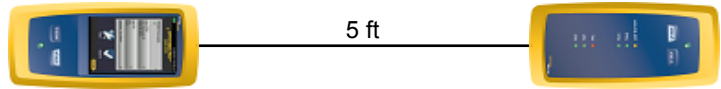
Software Version: V6.11 Build 2

Calibration Date: 12/27/2024

Adapter: DSX-8000R (DSX-CHA804)

S/N: 22211865

Length (ft), Limit 328	[Pair 1,2]	5
Prop. Delay (ns), Limit 555	[Pair 3,6]	7
Delay Skew (ns), Limit 50	[Pair 1,2]	0
Resistance (ohms), Limit 25.00	[Pair 1,2]	0.84
Insertion Loss Margin (dB)	[Pair 3,6]	35.2
Frequency (MHz)	[Pair 3,6]	250.0
Limit (dB)	[Pair 3,6]	35.9



Worst Case Margin Worst Case Value

N/A	MAIN	SR	MAIN	SR
Worst Pair	3,6-4,5	3,6-4,5	3,6-4,5	3,6-4,5
<b>NEXT (dB)</b>	16.5	15.3	35.2	33.6
Freq. (MHz)	3.0	3.0	186.5	187.0
Limit (dB)	65.0	65.0	35.3	35.3
Worst Pair	3,6	3,6	3,6	3,6
<b>PS NEXT (dB)</b>	18.6	16.8	38.0	36.8
Freq. (MHz)	5.1	3.3	250.0	246.0
Limit (dB)	58.8	62.0	30.2	30.3

PASS	MAIN	SR	MAIN	SR
Worst Pair	4,5-3,6	3,6-4,5	3,6-4,5	3,6-4,5
<b>ACR-F (dB)</b>	19.0	19.1	20.8	20.8
Freq. (MHz)	53.0	53.0	250.0	250.0
Limit (dB)	28.8	28.8	15.3	15.3
Worst Pair	3,6	3,6	3,6	3,6
<b>PS ACR-F (dB)</b>	21.0	21.0	22.7	22.7
Freq. (MHz)	49.5	49.0	250.0	250.0
Limit (dB)	26.4	26.5	12.3	12.3

PASS	MAIN	SR	MAIN	SR
Worst Pair	3,6-4,5	3,6-4,5	3,6-4,5	3,6-4,5
<b>ACR-N (dB)</b>	20.4	19.2	65.1	63.6
Freq. (MHz)	3.0	3.0	186.5	187.0
Limit (dB)	61.0	61.0	4.8	4.7
Worst Pair	3,6	3,6	3,6	3,6
<b>PS ACR-N (dB)</b>	22.5	20.7	73.3	71.7
Freq. (MHz)	3.3	3.3	250.0	246.0
Limit (dB)	58.0	58.0	-5.8	-5.3

N/A	MAIN	SR	MAIN	SR
Worst Pair	4,5	4,5	4,5	4,5
<b>RL (dB)</b>	13.6	12.0	16.6	15.2
Freq. (MHz)	40.3	40.3	250.0	250.0
Limit (dB)	16.0	16.0	8.0	8.0

Compliant Network Standards:  
 10BASE-T 100BASE-TX 100BASE-T4  
 1000BASE-T 2.5GBASE-T 5GBASE-T  
 ATM-25 ATM-51 ATM-155  
 100VG-AnyLan TR-4 TR-16 Active  
 TR-16 Passive