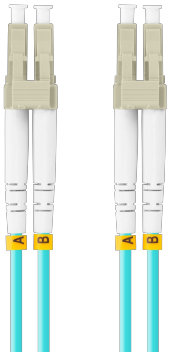
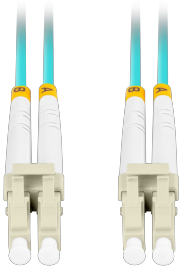
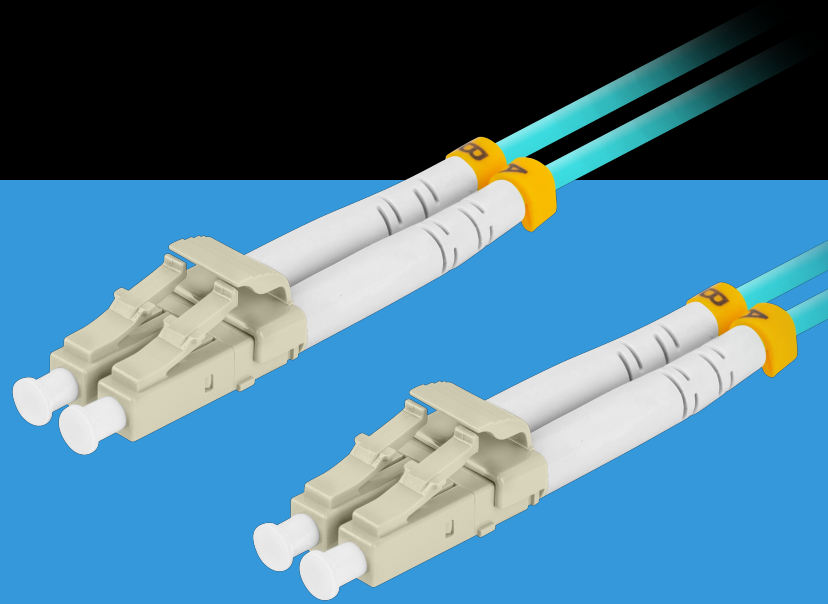


FO-LULU-MD31-0100-TQ

# FIBER OPTIC PATCHCORD



## PRODUCT FEATURES:

- Low attenuation of connectors
- Repeatability of transmission parameters
- High bending radius
- Product compliance with IEC/ISO standards
- LSZH (Low Smoke Zero Halogen) outer coating

## PRODUCT SPECIFICATION:

Connectors	LC
Cable length	1 000 cm
Polishing standard	UPC
Fiber optic type	OM3
Fiber Type	Multi-Mode
Fiber diameter	50/125
Cable Construction	Duplex
Cable diameter	3 mm
Coating material	LSZH
Insertion loss	0,2 dB
Return loss	30 dB
Environment temperature	from -40 up to 85 °C
Minimum bend radius	7,5
Colour	Turquoise